



LOCATED MINUTES FROM I-77 IN A CAMPUS-LIKE SETTING

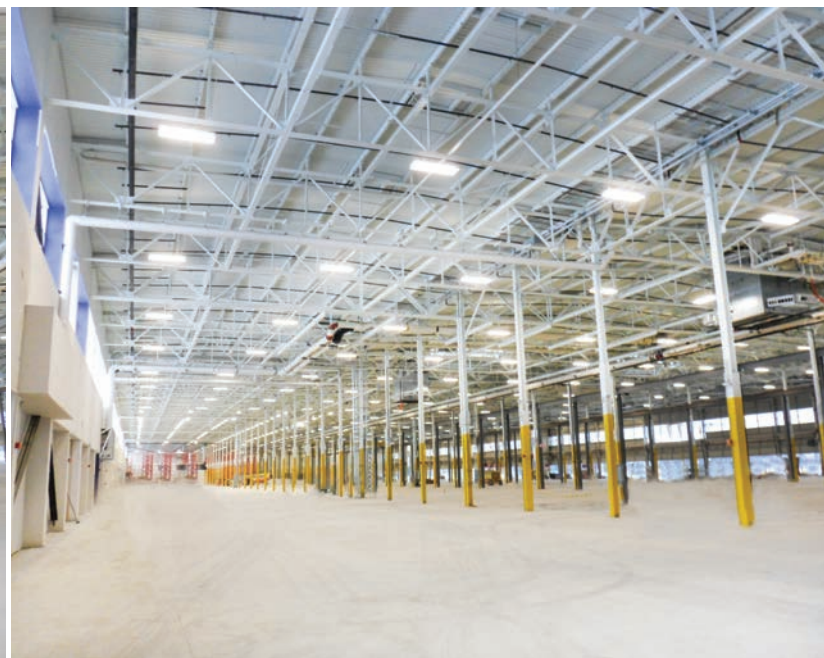
### MANUFACTURING/WAREHOUSE

- Total building size: **620,692 SF**
- Minimum divisible by: **164,540 SF**
- Ceiling Height: **25'-32' clear**
- Drive-Ins: **2**
- Docks to suit
- Sprinkler: **ESFR**
- Column Span: **200' x 1,000'**
- Power: **6500 amps 480V**
- Cranes: **Multiple - Ranging from 2- 5 Ton**



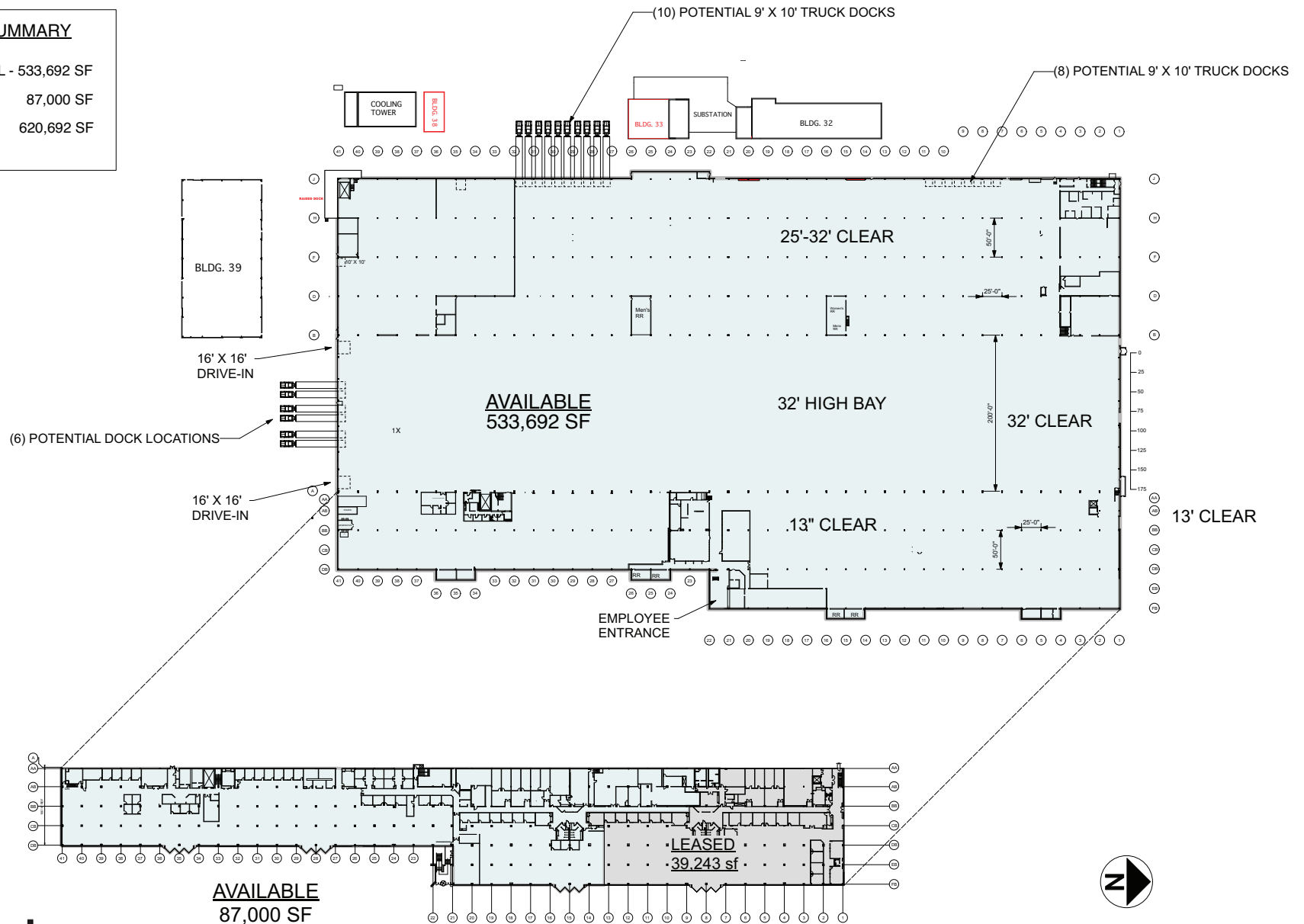


\*Example pictures showing a completed space with similar specifications



## LMA BUILDING C SUMMARY

LOWER LEVEL INDUSTRIAL - 533,692 SF  
UPPER LEVEL OFFICE - 87,000 SF  
TOTAL AVAILABLE - 620,692 SF



PLANT C - EAST OFFICE

