

Industrial/Warehouse Building

5520 Chevrolet Boulevard • Parma, OH



Features

Total Size: 575,000 SF
Year Built/Renovated: 1971/2011
Ceiling Height: 20'-36'
Loading Docks: 15 +
Drive-ins: 4
Crane: 25-T
Minutes from I-480, I-71 and Cleveland Hopkins International Airport

This information has been secured from sources we believe to be reliable, but we make no representations or warranties, expressed or implied, as to the accuracy of the information. References to condition, square footage or age are approximate. Buyer or Tenant acknowledges that they are relying on their own investigations and are not relying on Broker provided information.



For More Information Contact
Austin Semarjian
216.570.2270
asemarjian@icpllc.com

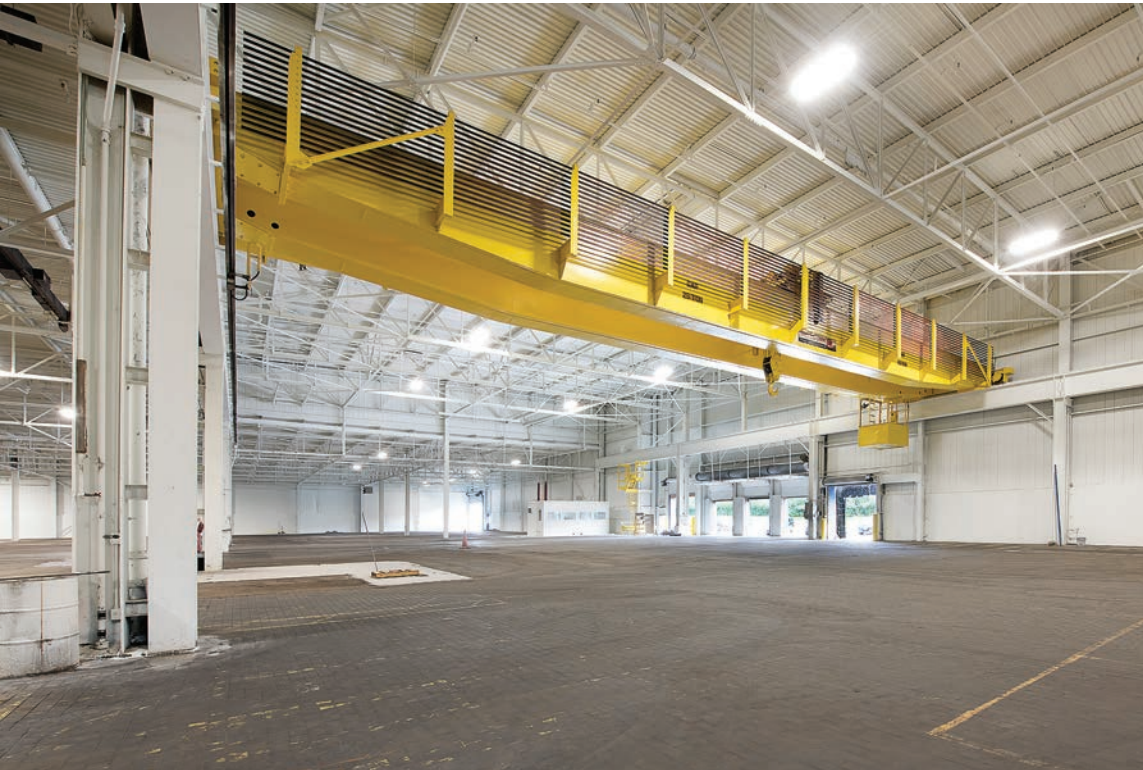
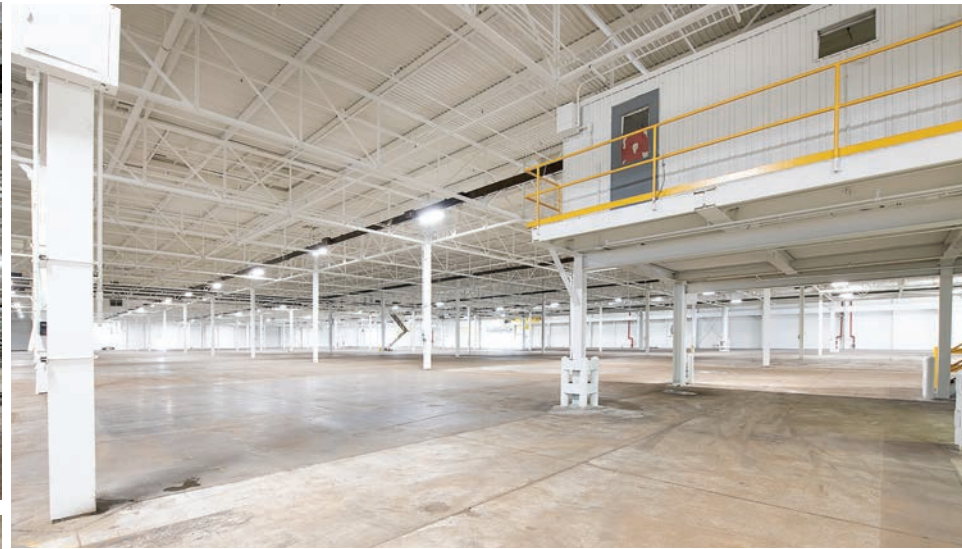
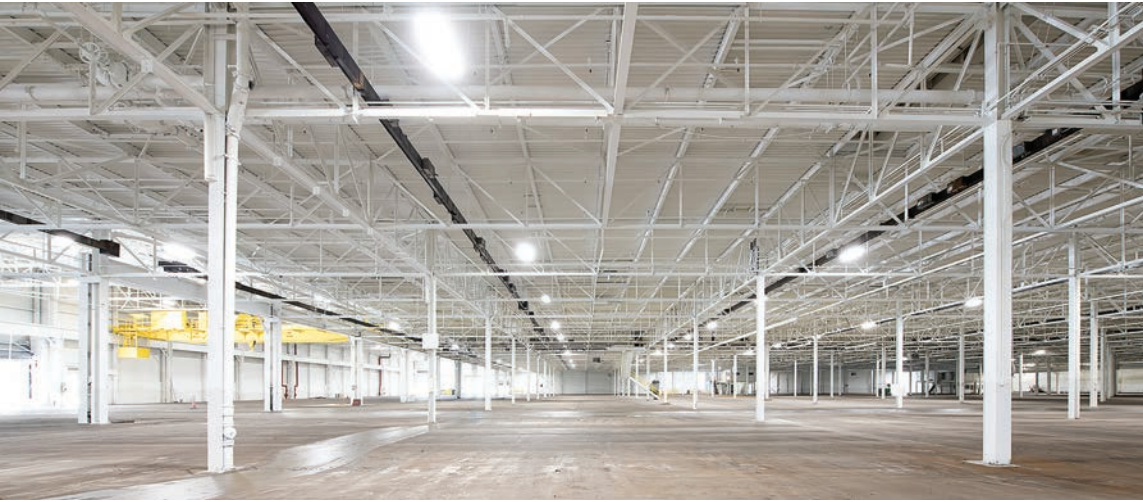
Industrial/Warehouse Building

5520 Chevrolet Boulevard • Parma, OH



Industrial/Warehouse Building

5520 Chevrolet Boulevard • Parma, OH



Industrial/Warehouse Building

5520 Chevrolet Boulevard • Parma, OH

