

For More Information Contact
Michelle Nicholson
440.539.3545
mnicholson@irgicp.com



MANUFACTURING/DISTRIBUTION

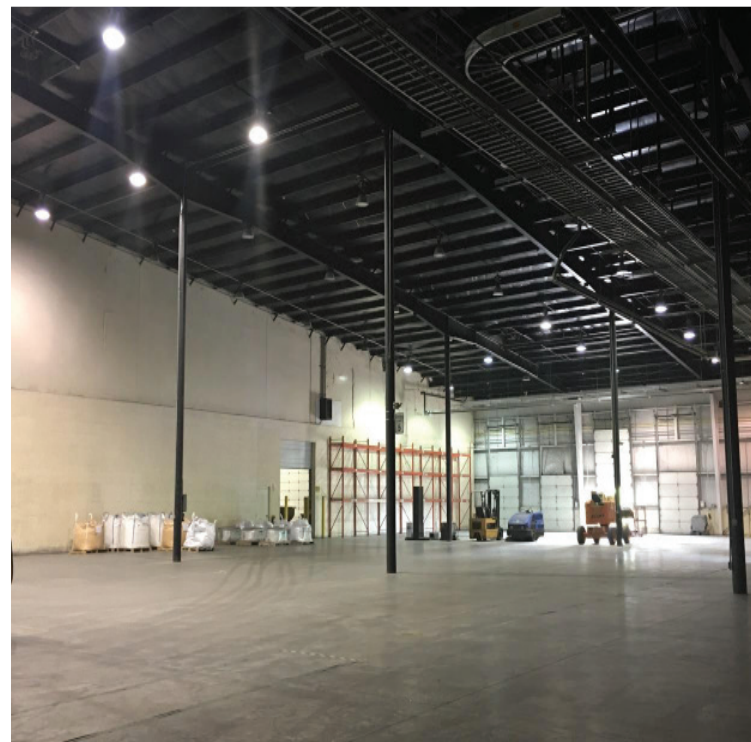
3021 Saratoga Ave. SW, Canton, Ohio 44706



PROPERTY DETAILS

Total Building:	103,572 SF
Warehouse:	98,013 SF
Office:	5,559 SF (3,371 SF 2nd floor)
Ceiling Height:	36'6" - 25'9" (pitched slope)
Column Spacing:	Primarily 30' x 60'
Dock:	12
Drive-ins:	4
Power:	480V, 3Phase, 2000kVA

Just over 1 mile from US 62/Rt.30 near I-77 interchange
Features include security system, truck scale, fenced grounds, covered truck docks, and plenty of parking.

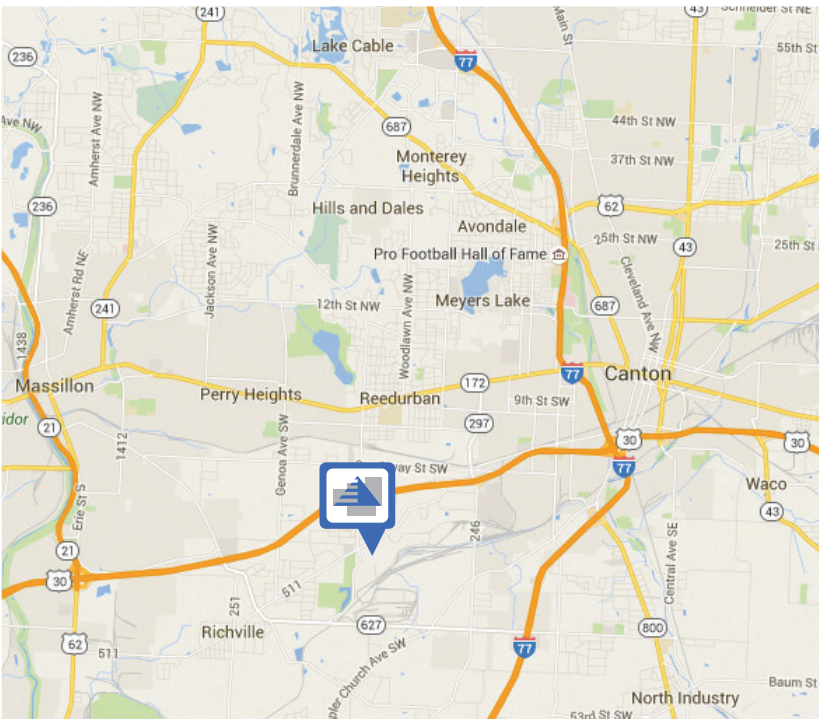
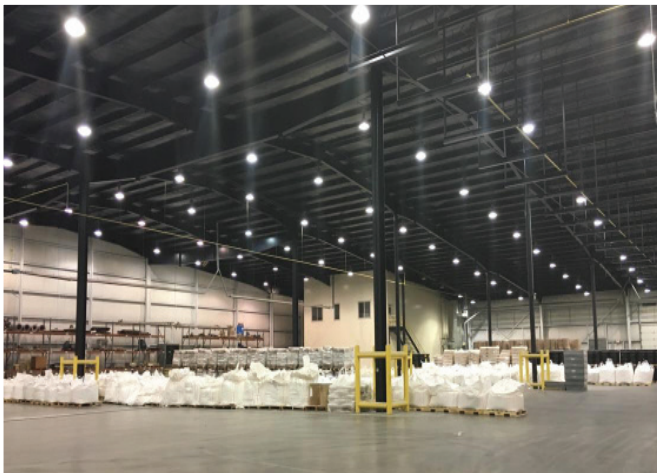


For More Information Contact
Michelle Nicholson
440.539.3545
mnicolson@irgicp.com



MANUFACTURING / DISTRIBUTION

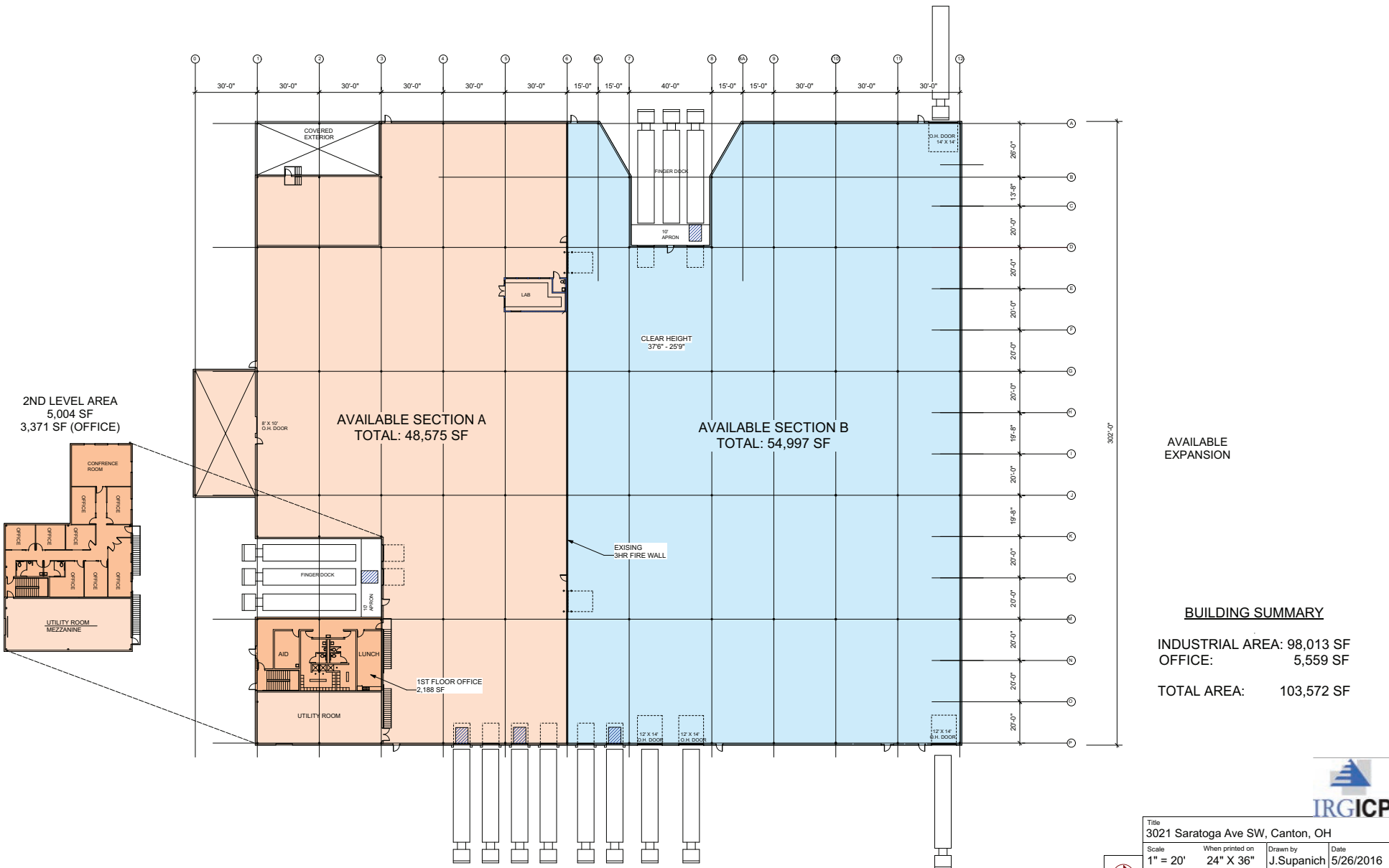
3021 Saratoga Ave. SW, Canton, Ohio 44706



MANUFACTURING / DISTRIBUTION

3021 Saratoga Ave. SW, Canton, Ohio 44706

For More Information Contact
Michelle Nicholson
 440.539.3545
 mnicholson@irgicp.com



AVAILABLE EXPANSION

BUILDING SUMMARY
 INDUSTRIAL AREA: 98,013 SF
 OFFICE: 5,559 SF
 TOTAL AREA: 103,572 SF

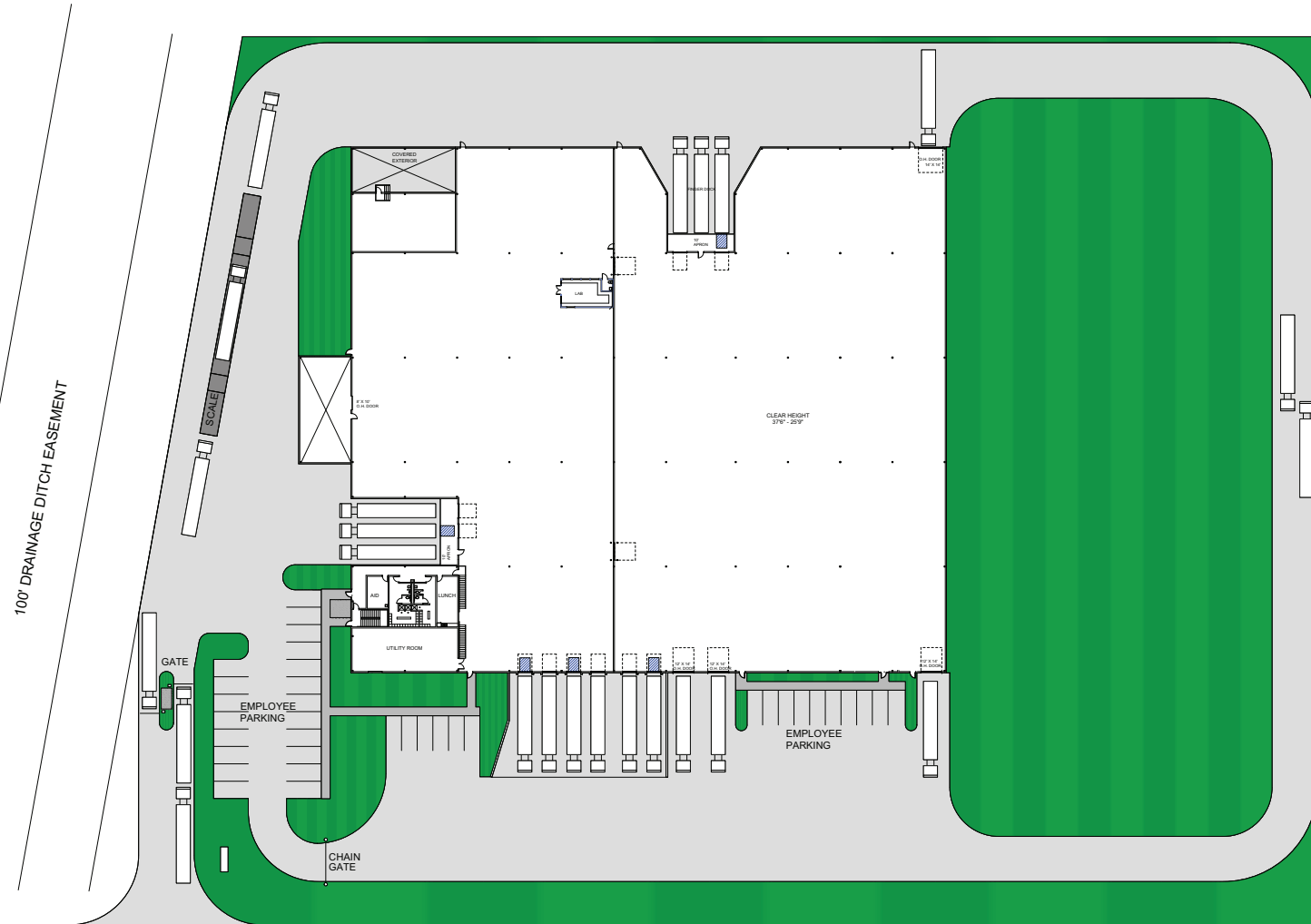


Title 3021 Saratoga Ave SW, Canton, OH			
Scale 1" = 20'	When printed on 24" X 36"	Drawn by J.Supanich	Date 5/26/2016
File Name Saratoga 2 Building Layout -- 5-7-2019.vwx			

MANUFACTURING / DISTRIBUTION

3021 Saratoga Ave. SW, Canton, Ohio 44706

For More Information Contact
Michelle Nicholson
 440.539.3545
 mnicholson@irgicp.com



SARATOGA AVE.



Title 3021 Saratoga Ave SW, Canton, OH			
Scale 1" = 30'	When printed on 24" X 36"	Drawn by J.Supanich	Date 5/8/2019
File Name Saratoga 2 Site Layout-VWTMP v2019.vwx			